



# Hayden Update 2014

Tom Woolf

Aquatic Program Manager

Idaho State Department of Agriculture

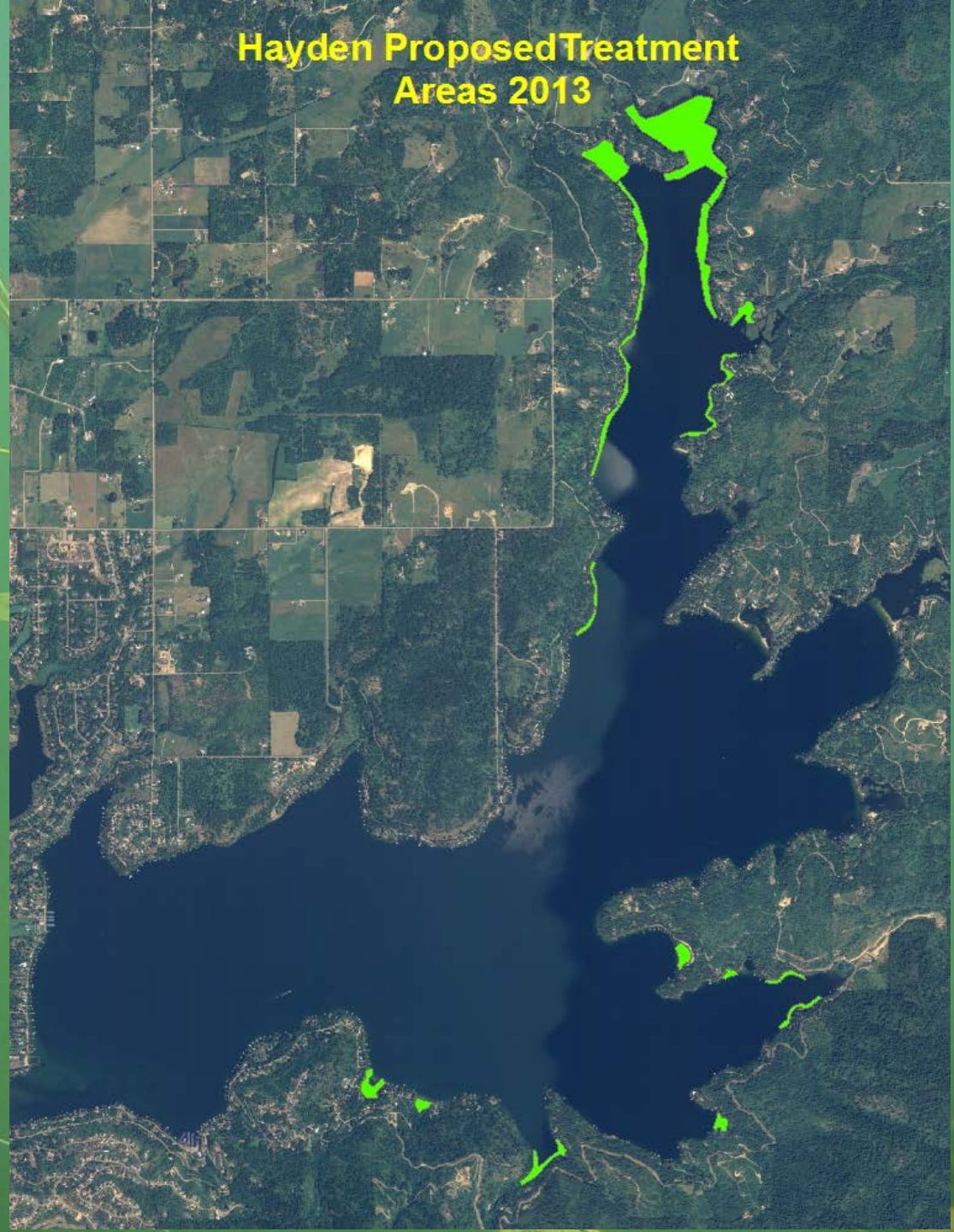
# Treatment Areas 2013

125 acres

- Sportsman
- Mcleans
- Revilo
- Vandenburg
- Harts
- Oroark
- Clarks
- Bobs
- Rollins
- Shenandoah Beach
- Taylor Terrace
- Windy Bay

Diver removal from  
Honeysuckle and Marina

Hayden Proposed Treatment  
Areas 2013



# Milfoil Treatments: Efficacy

- Efficacy ranged from excellent to moderate
- Genetic analysis found Eurasian x Native milfoil hybrids remaining after treatment in some areas.
  - Milfoil hybrids tend to be more tolerant of herbicides
  - Tend to be just as aggressive as Eurasian.
- Treatments using 2,4-D / endothall mixes were very effective.

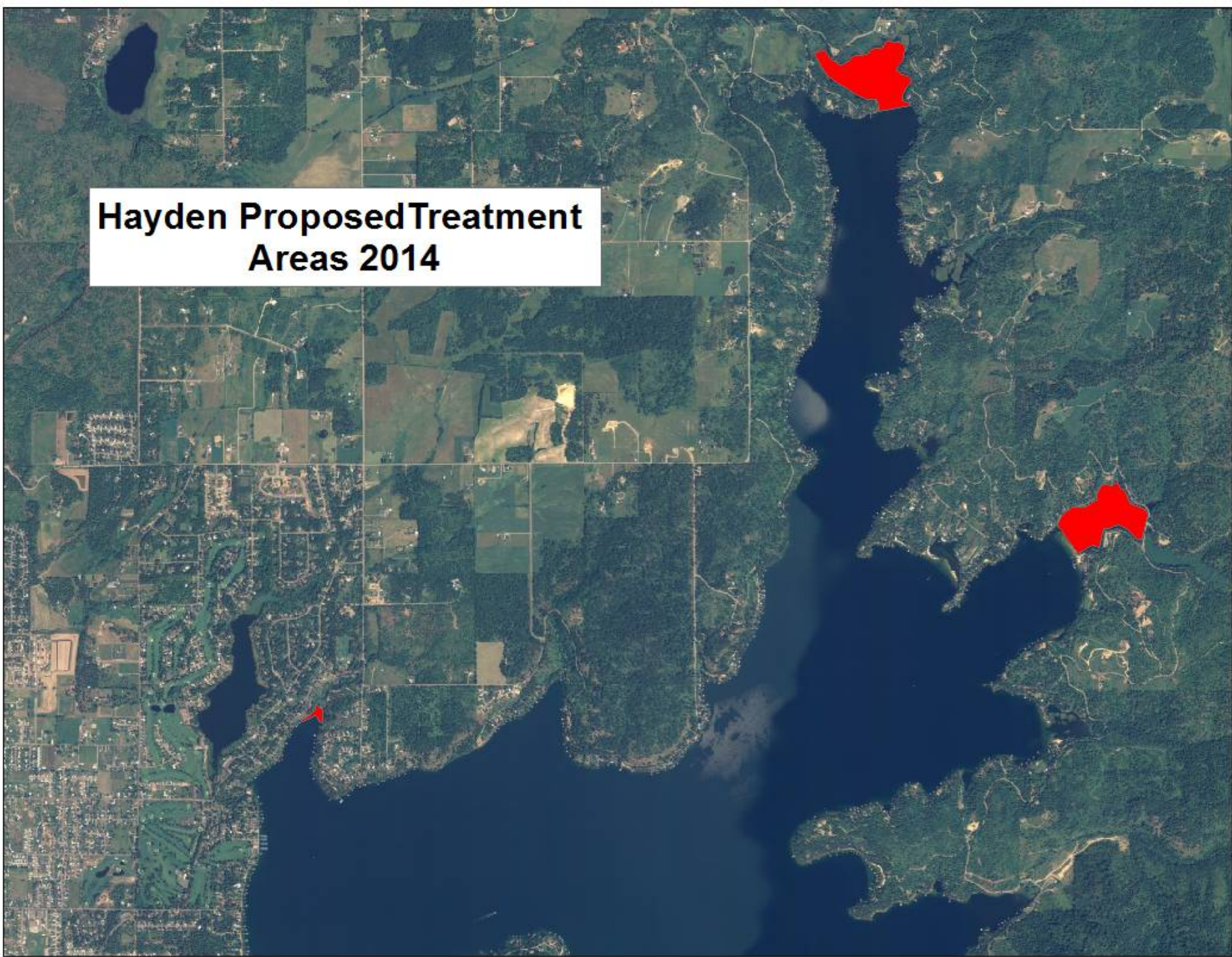
# Milfoil Treatments: Restrictions

- 2,4-D and endothall used.
- Minimum 10 days of water use restrictions.
  - Irrigation and drinking water restrictions.
- Some areas had restrictions for 23 days.
- Treatment of hybrid milfoils requires higher rates = longer restrictions

# Treatment Plans for 2014

- Treat at the beginning of June
- Use 2,4-D / endothall mixes
- 100 acres proposed
- Sportsmans, Mockins and Berven Bays
- Diver removal at Honeysuckle and Hayden Marina.
- Need Input

**Hayden Proposed Treatment  
Areas 2014**



# Native Plants

- Dense native plants observed again this year
- Idaho Department of Lands Barrier Permits available
- Raking
- Harvesting

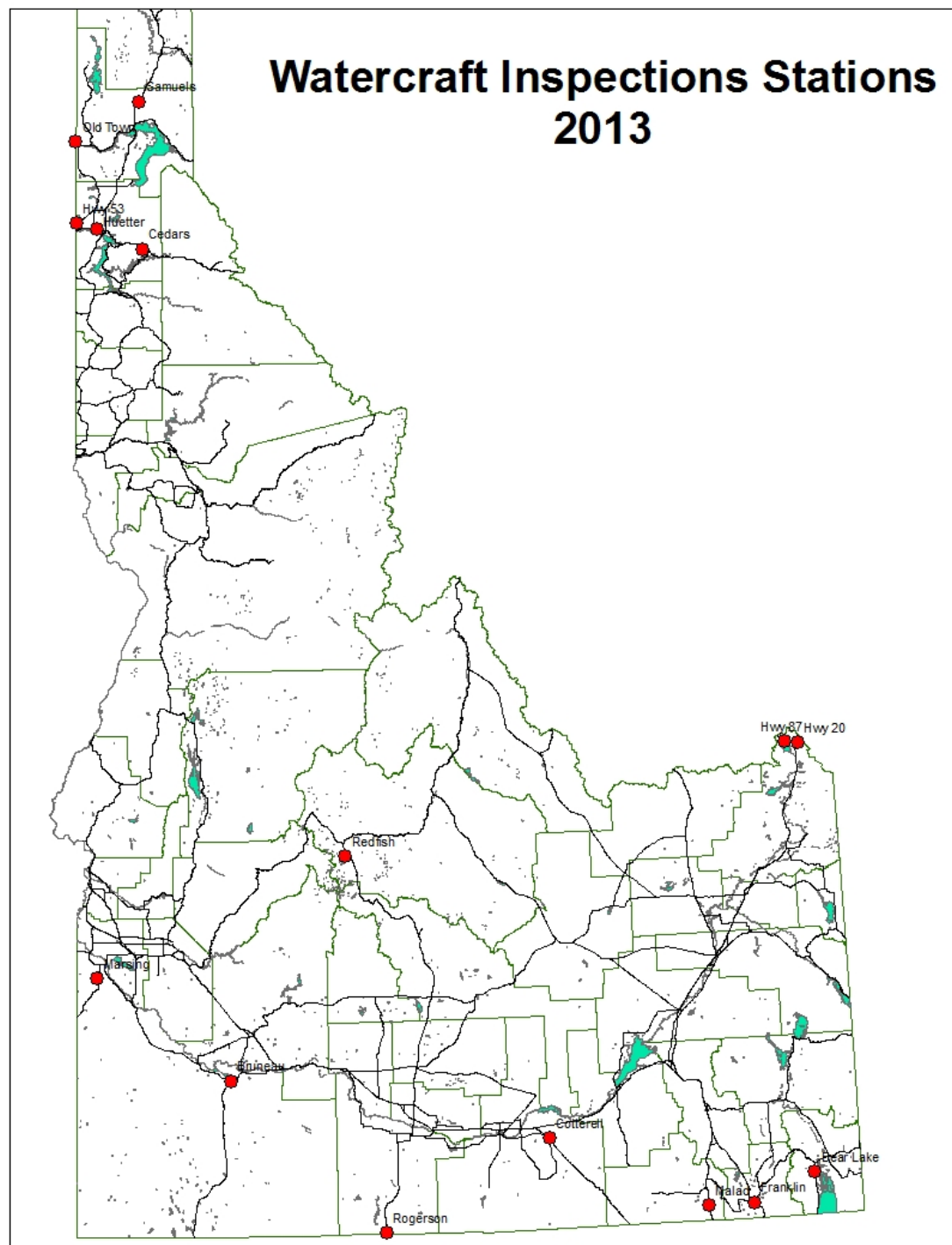


# Zebra & Quagga Mussels Prevention



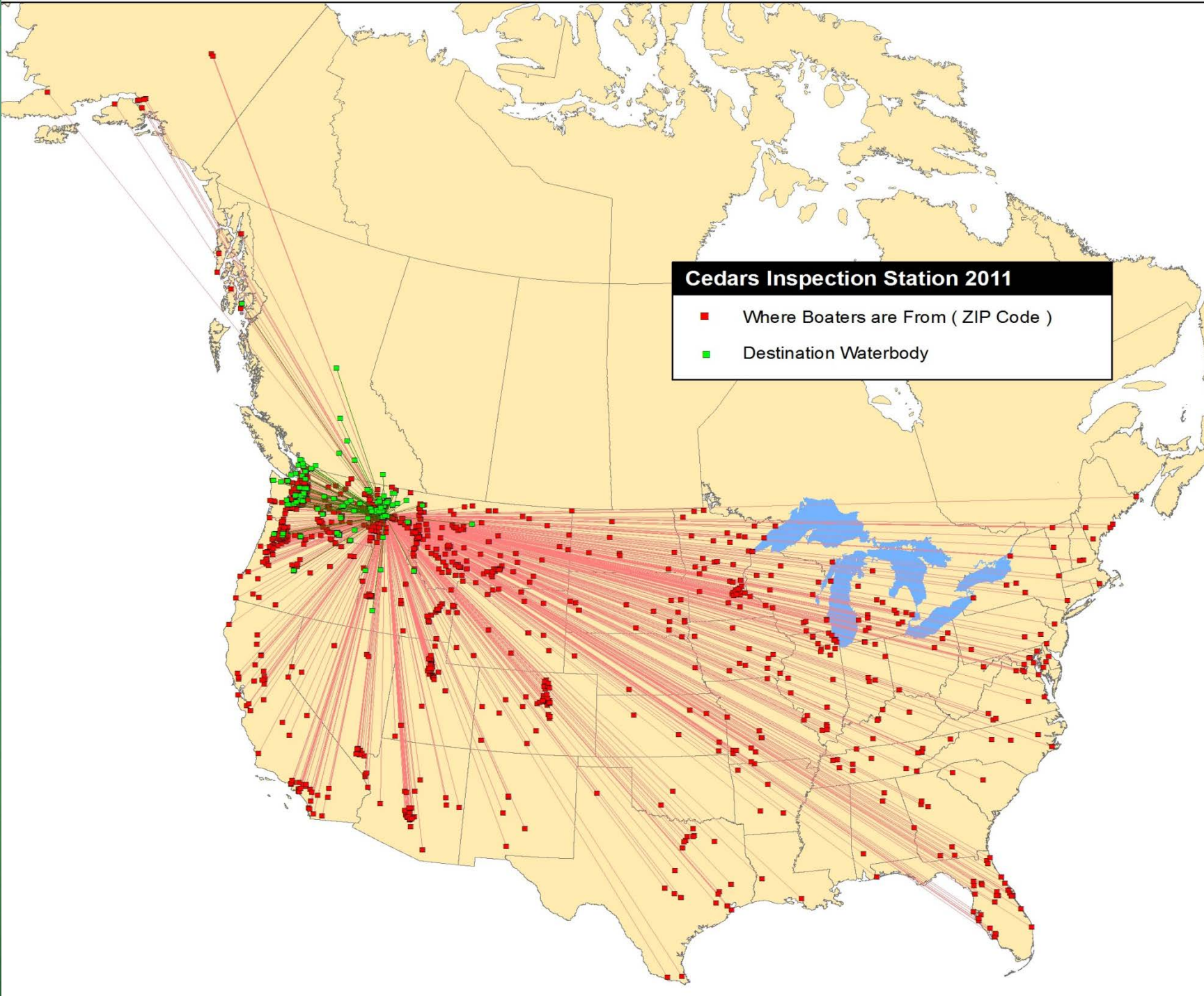
# Idaho Watercraft Inspection Stations

- 15 Stations
- Inspection mandatory
- Focused on state borders.
- Stations funded by Invasive Species sticker, milfoil program & USFS



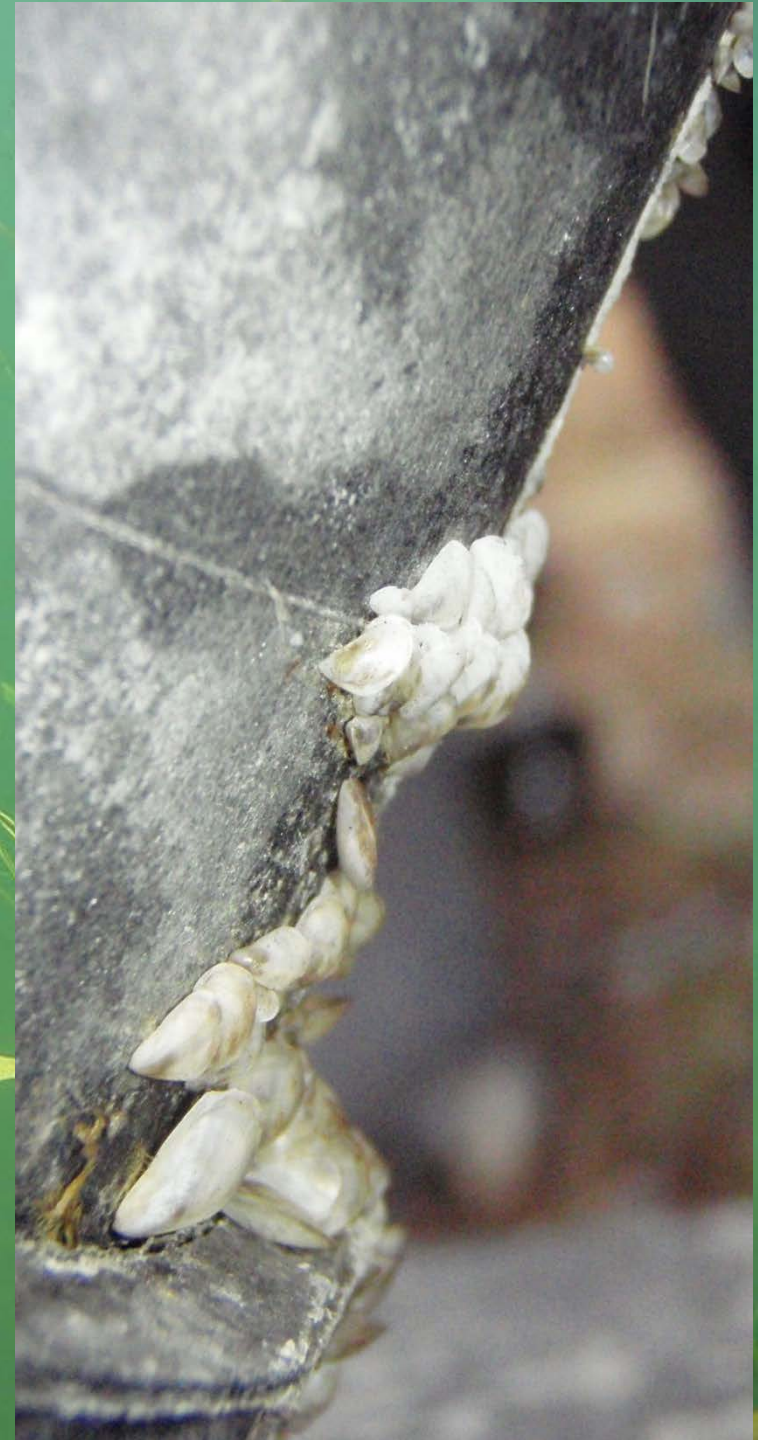
### Cedars Inspection Station 2011

- Where Boaters are From ( ZIP Code )
- Destination Waterbody



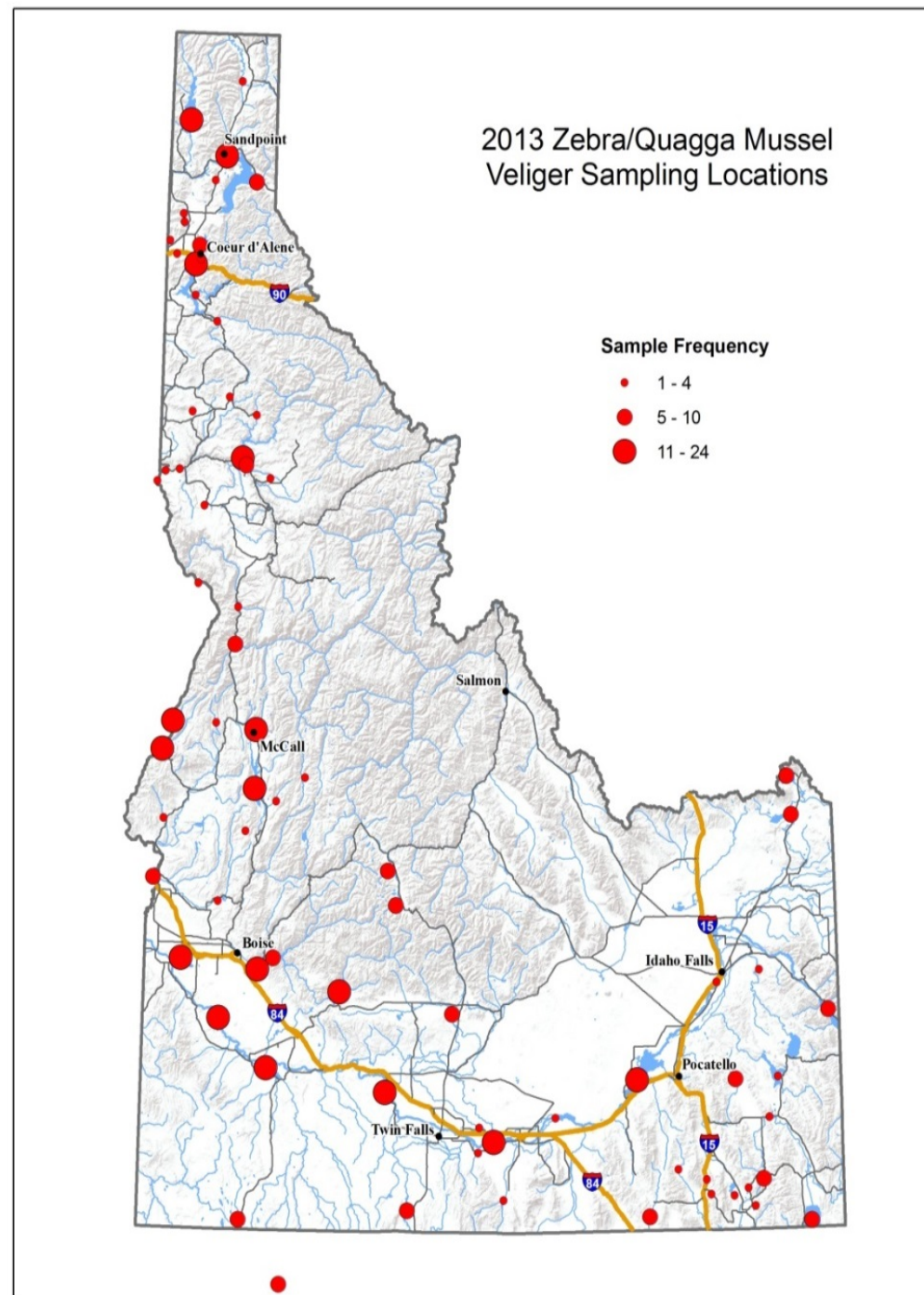
# Intercepted Vessels with Mussels

- **2013: 12 boats intercepted**
- **105 to date**
- **2014: Stations open Feb 15<sup>th</sup>**



# Survey

- 68 waterbodies surveyed 2013
  - Zebra / Quagga plankton tows / substrates
  - Invasive plants
  - Other Invasive invertebrates.
- 20 samples from Hayden





[Thomas.woolf@agri.idaho.gov](mailto:Thomas.woolf@agri.idaho.gov)

(208)608-3404

[www.agri.idaho.gov](http://www.agri.idaho.gov)