The background of the slide is an underwater photograph showing green seaweed or algae with long, thin, trailing leaves and some bulbous structures, set against a clear, light green water background. The text is overlaid on this scene.

Hayden Aquatics Update 2013

Tom Woolf

Aquatic Program Manager

Idaho State Department of Agriculture

Hayden Aquatic Issues

- Milfoil
- Native Plants
- Invasive Species



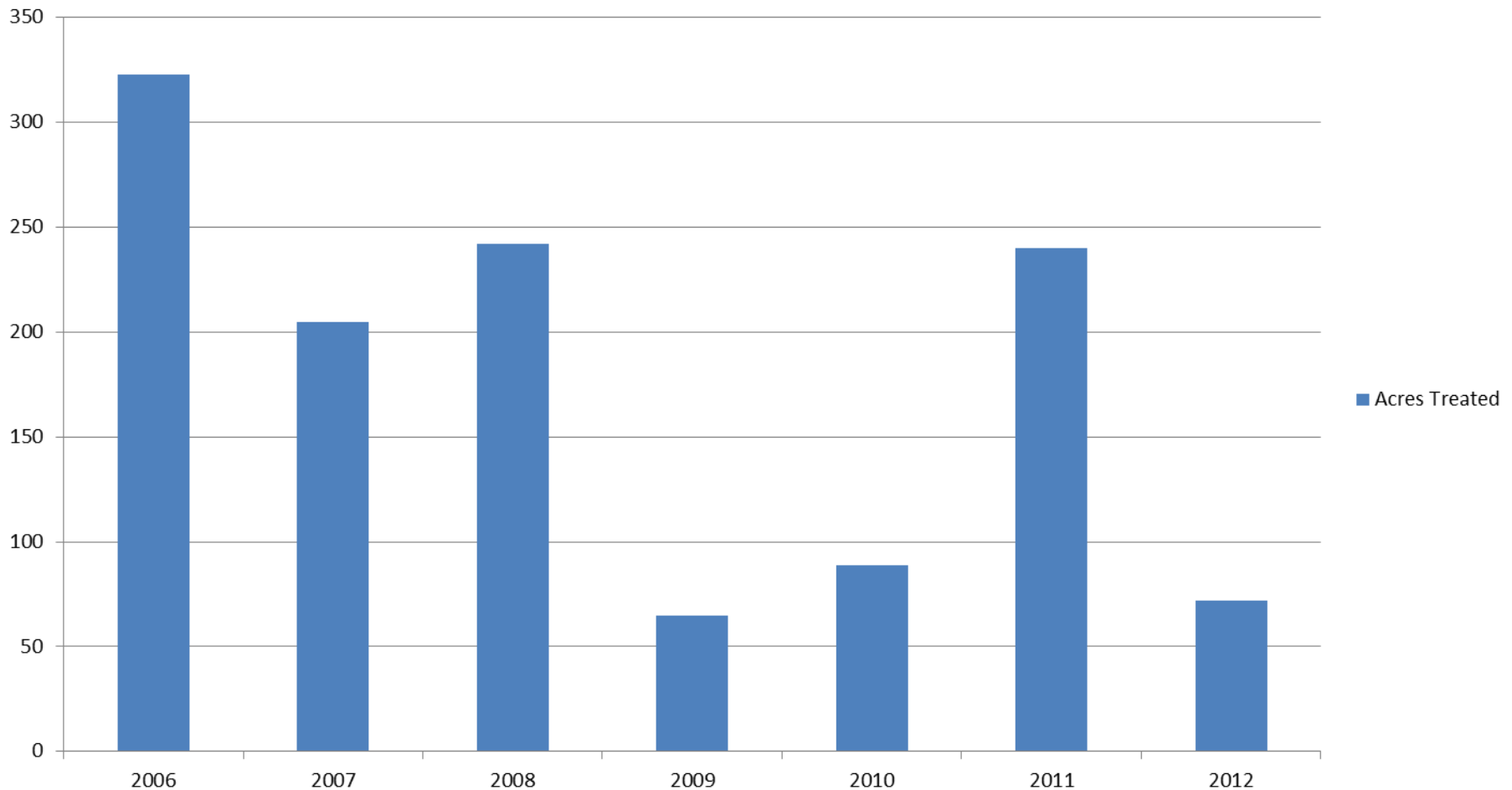
Eurasian Watermilfoil Program

- State funding became available in 2006
- ISDA Took Project Lead in 2012
- ISDA Contracts for all State Milfoil Treatments for Panhandle



Hayden Lake Milfoil Treatment

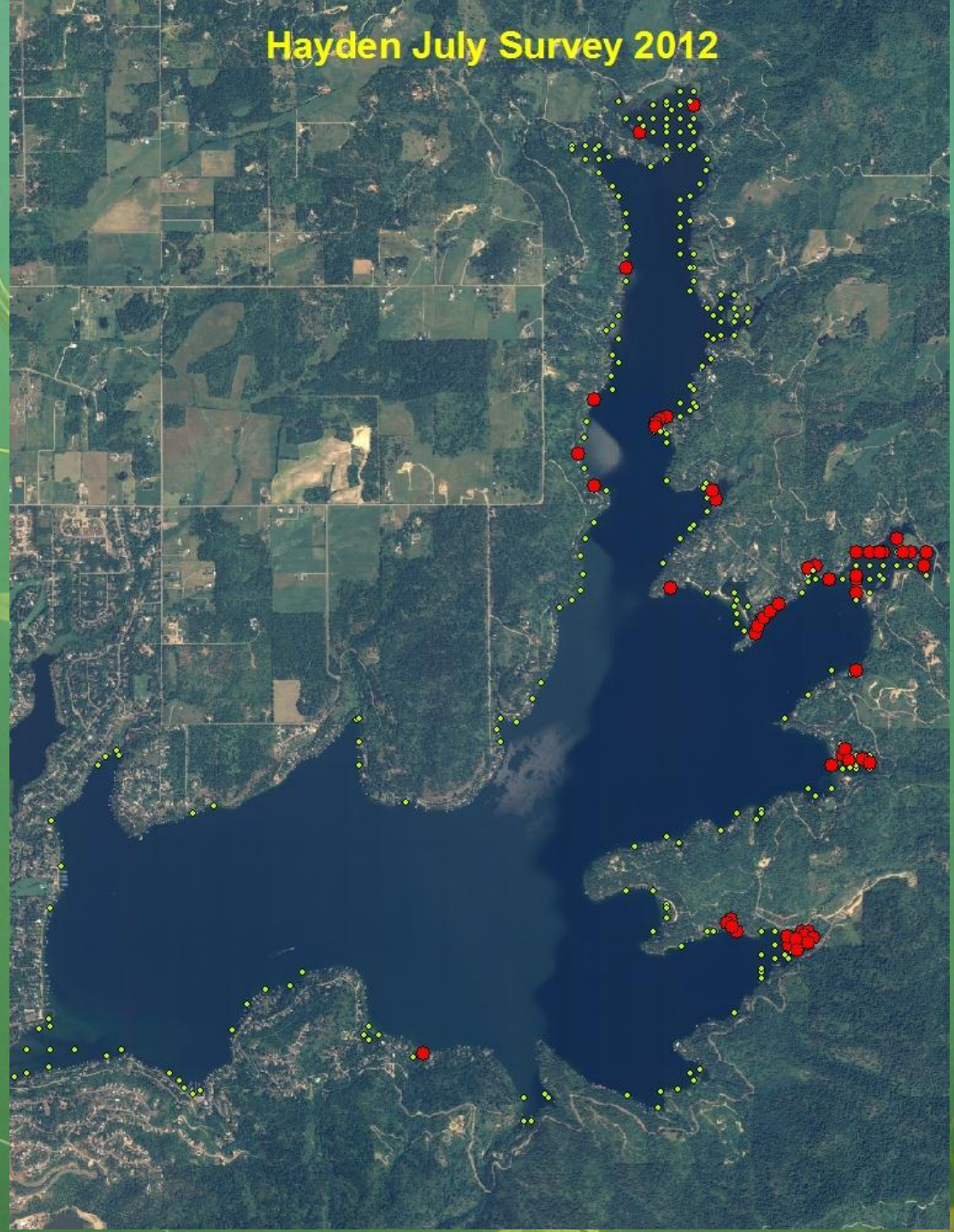
Acres Treated





Eurasian Watermilfoil

- Lake-wide survey in June & early July 2012.
- 72 Acres Identified as High Density Milfoil Areas
- Treated July 17th



Treatment

- 72 Acres Treated
- Efficacy appears to be excellent
- Triclopyr aquatic herbicide was used
- Water use restriction issues

Hayden July Survey 2012



Milfoil 2013

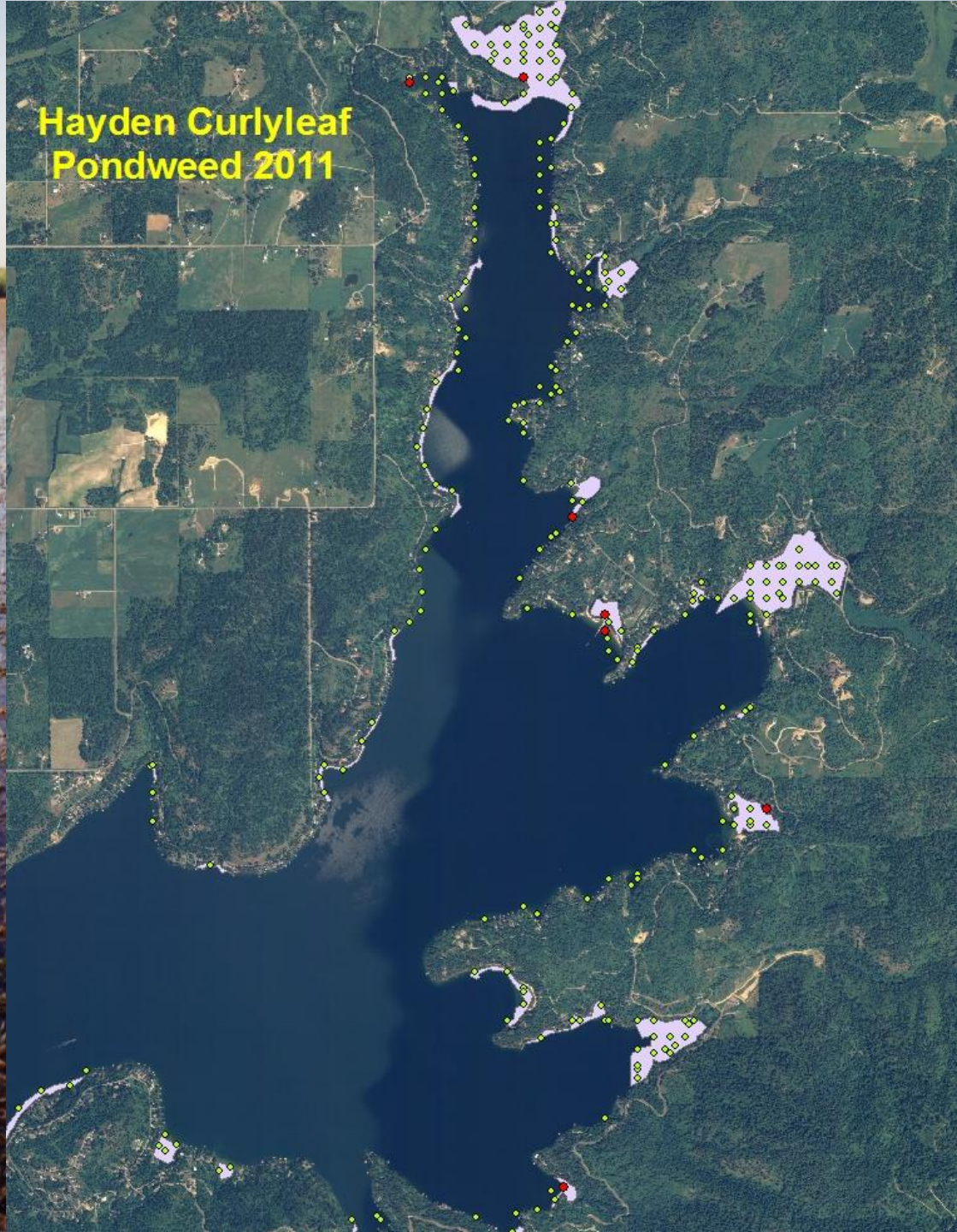
- Treat milfoil as early as feasible.
- Land owner notification:
 - Mailings, door to door, and shoreline and dock notification
- Look at using 2,4-D herbicide
- No fishing or swimming restrictions
- Irrigation and drinking water restrictions
- Expect minimum of 2 weeks for irrigation restrictions

Native Plants

- Dense native plants observed again this year
- Idaho Dept of Lands Barrier Permits available
- Raking
- Harvesting?



Curlyleaf Pondweed

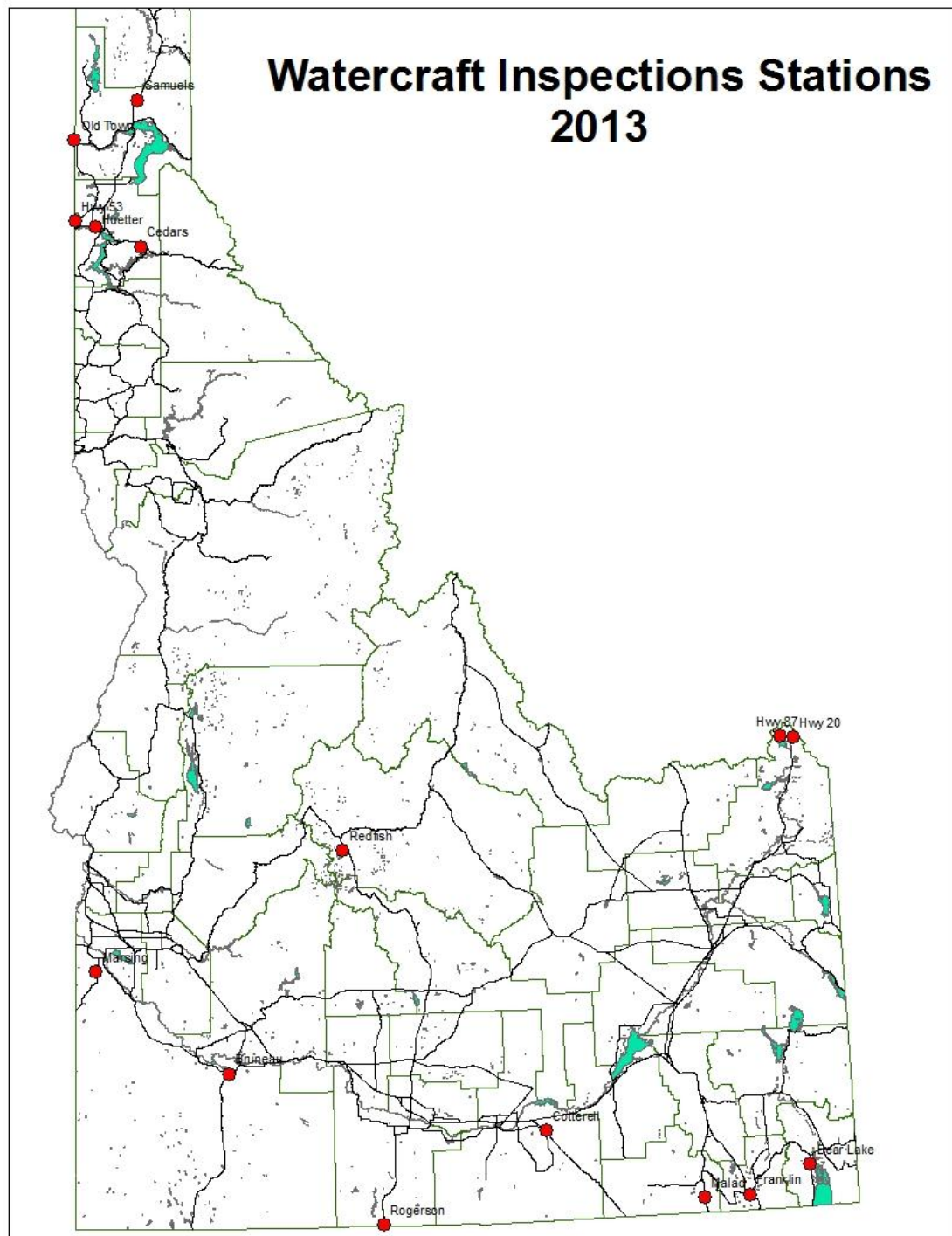


Zebra & Quagga Mussels Prevention



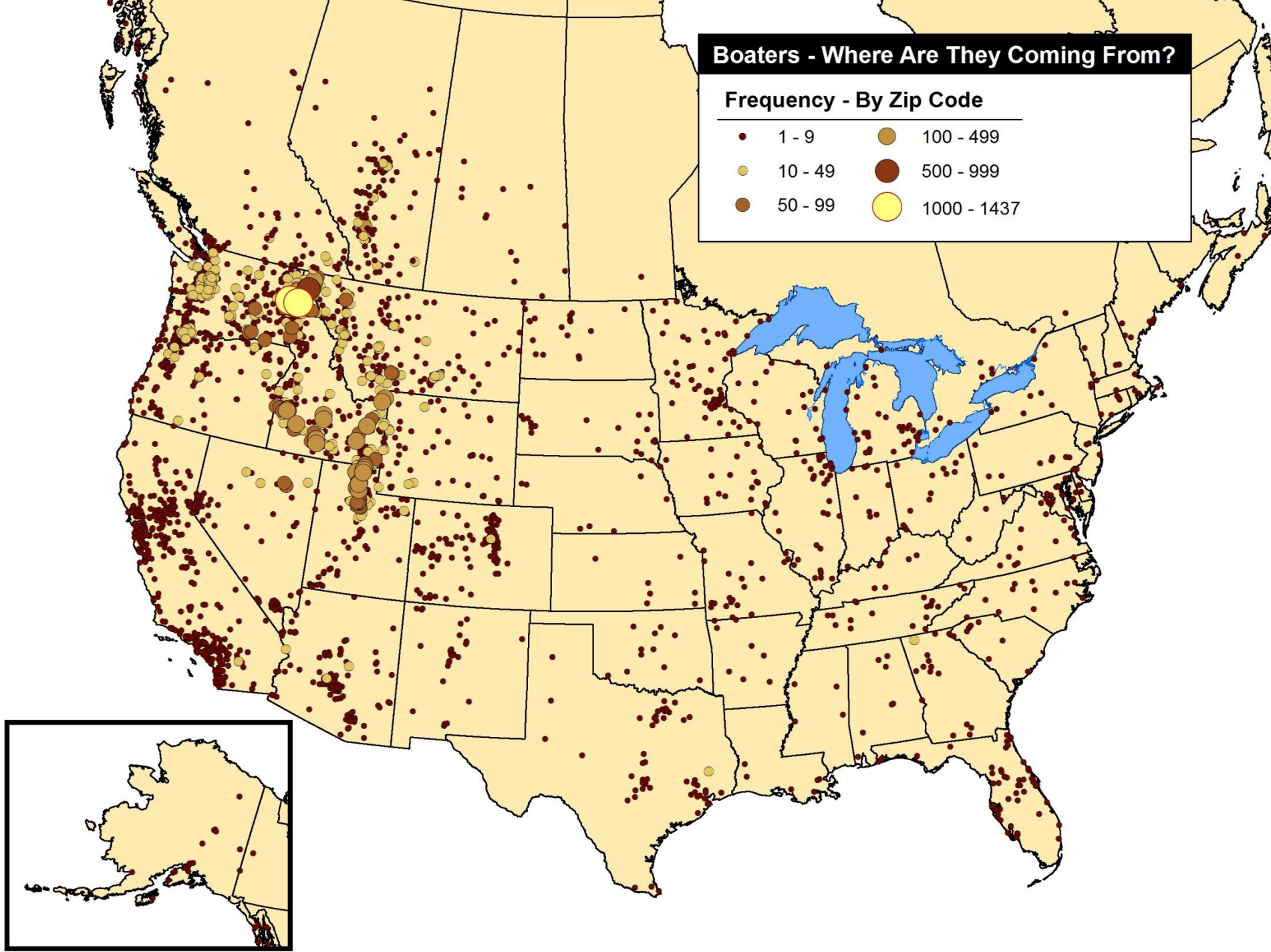
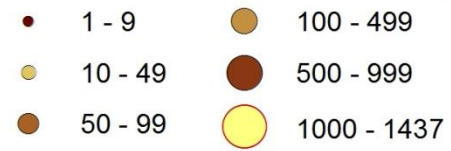
Idaho Watercraft Inspection Stations for 2013

- 15 Stations
- Inspection mandatory
- Focused on state borders.
- Stations funded by Invasive Species sticker, milfoil program & USFS



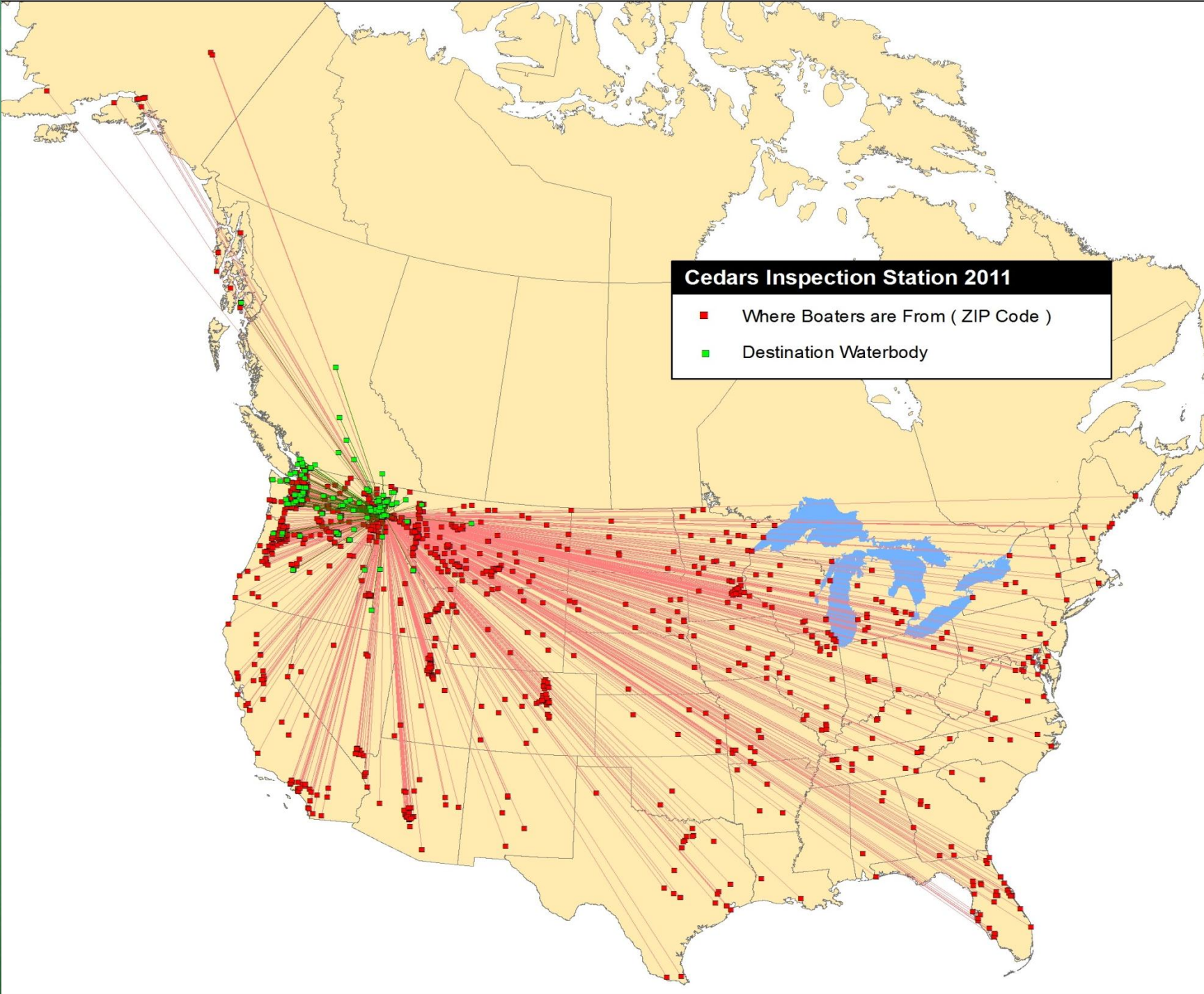
Boaters - Where Are They Coming From?

Frequency - By Zip Code



Cedars Inspection Station 2011

- Where Boaters are From (ZIP Code)
- Destination Waterbody



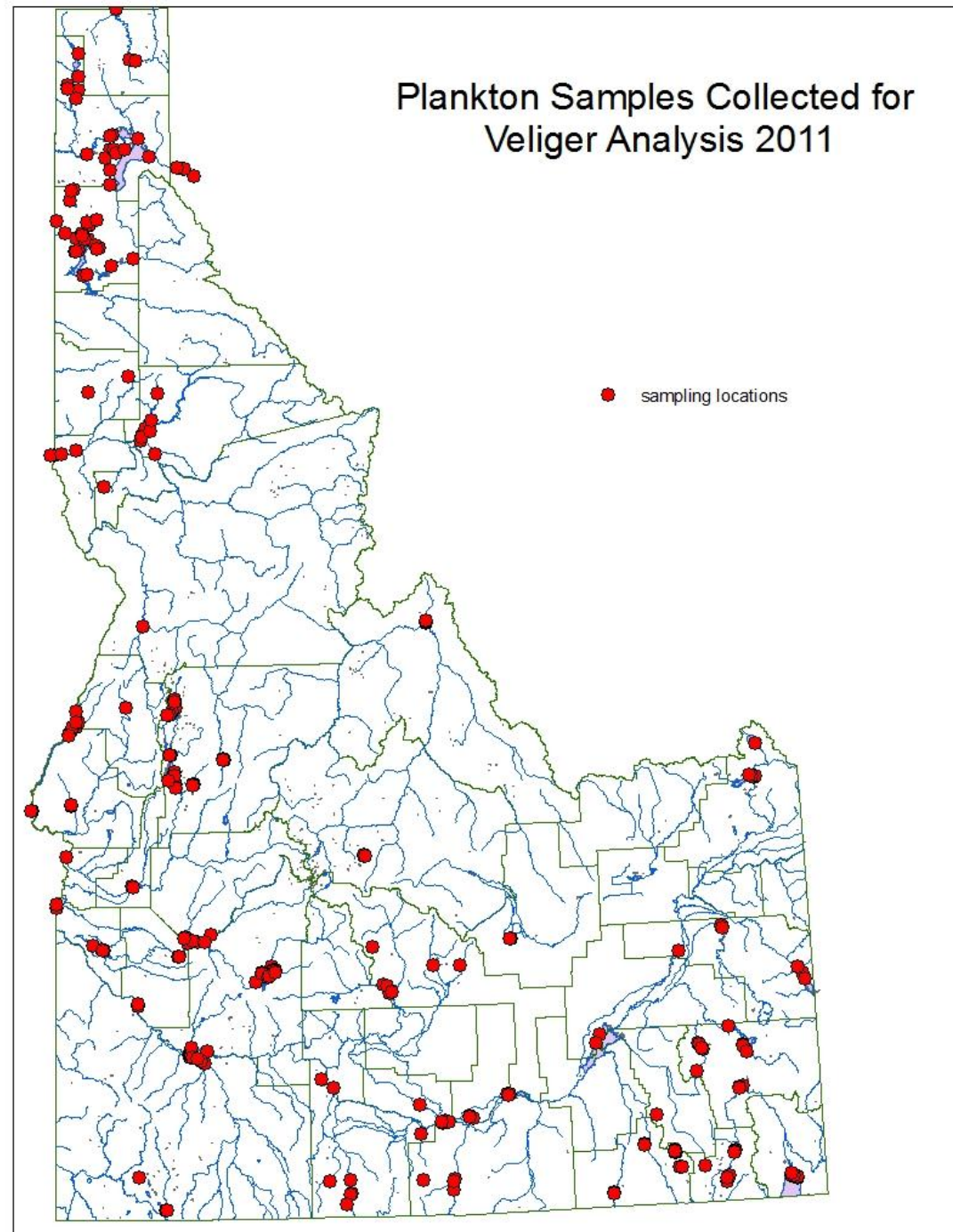
Intercepted Vessels with Mussels

- **2012: 57 boats intercepted**
 - 16 of those were in N Idaho
 - Over 50 with milfoil
- **2013: Stations opened Feb 8th**



Survey

- **Over 70 waterbodies surveyed 2011**
 - Zebra / Quagga plankton tows / substrates
 - Invasive plants
 - Other Invasive invertebrates.
- **20 samples from Hayden**



More Information



Thomas.woolf@agri.idaho.gov (208)608-3404

www.agri.idaho.gov