

Hayden Aquatics Update

Tom Woolf

Aquatic Program Manager

Idaho State Department of Agriculture

Hayden Aquatic Issues

- Aquatic Plants
- Native Plants
- Invasive Species



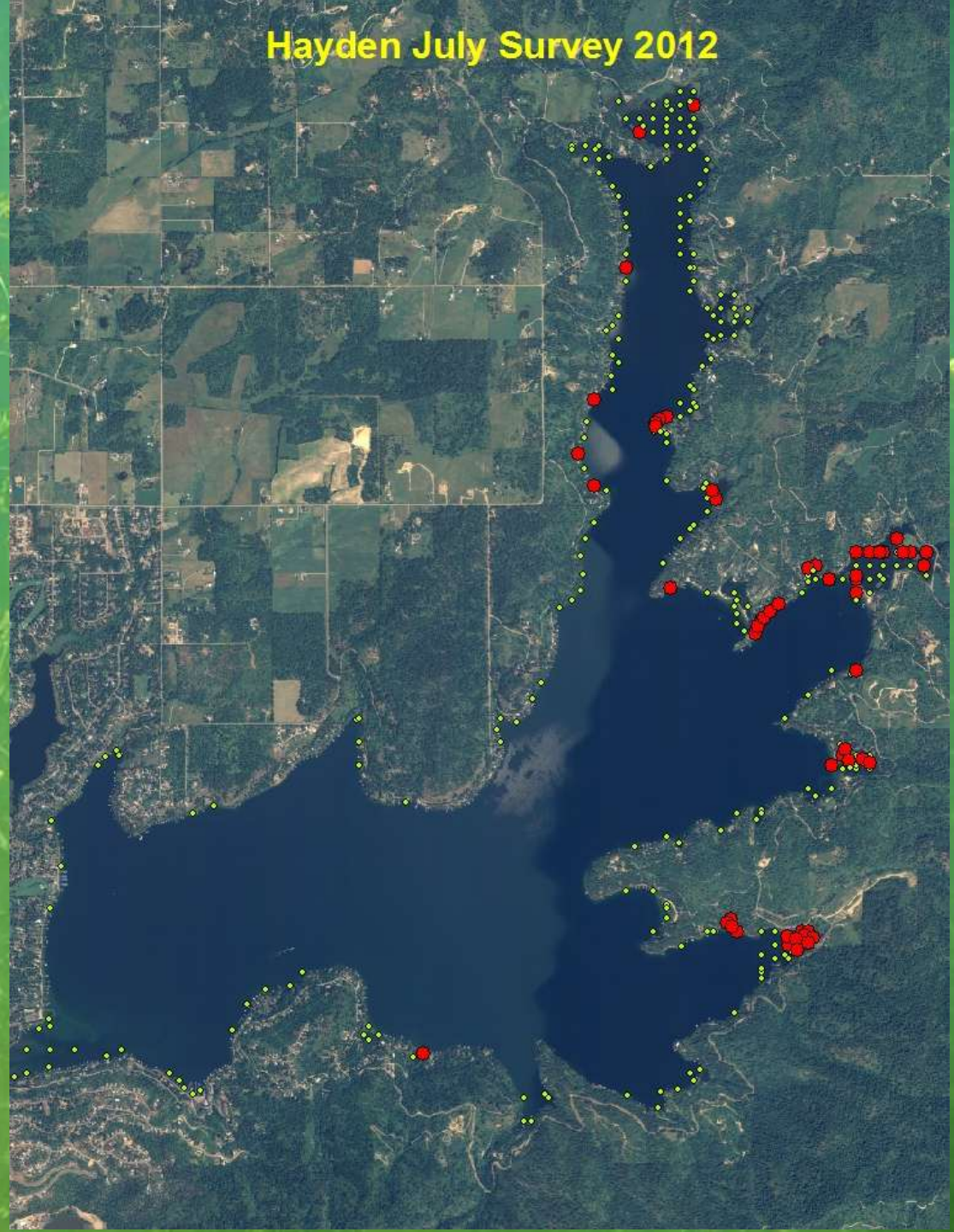
Eurasian Watermilfoil Program

- ISDA Took Project Lead in 2012
- Coordinate with County and Watershed Association on treatment Planning
- ISDA Contracted for Milfoil Treatments for Panhandle



Eurasian Watermilfoil

- Lake-wide survey in June & early July.
- 72 Acres Identified as High Density Milfoil Areas
- Treated July 17th



Treatment

- 72 Acres Treated
- Efficacy appears to be excellent
- Triclopyr aquatic herbicide was used
- Water use restrictions

Hayden July Survey 2012



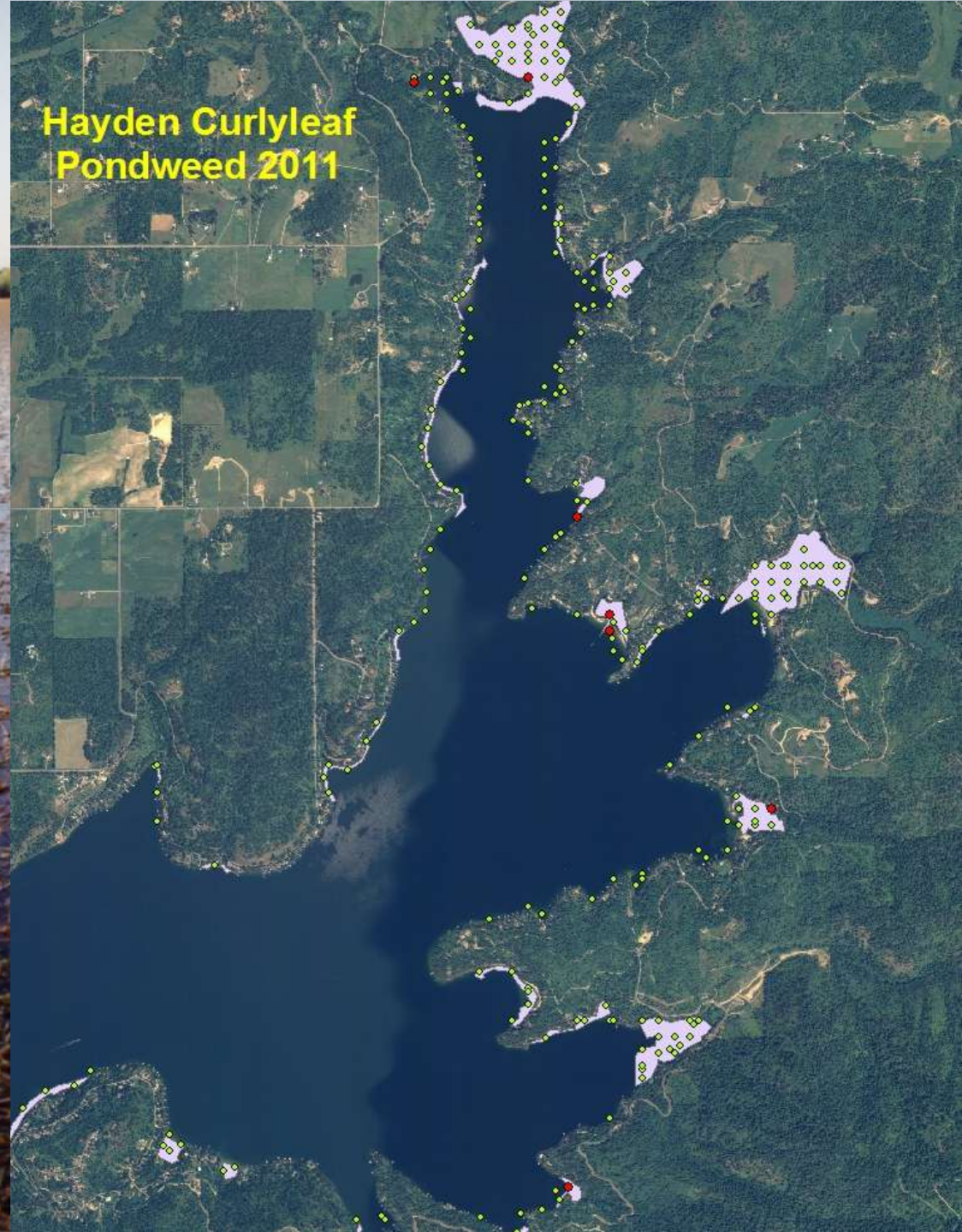
Native Plants

- Dense native plants observed this year
- Idaho Dept of Lands Barrier Permits
- Raking
- Harvesting?





Curlyleaf Pondweed

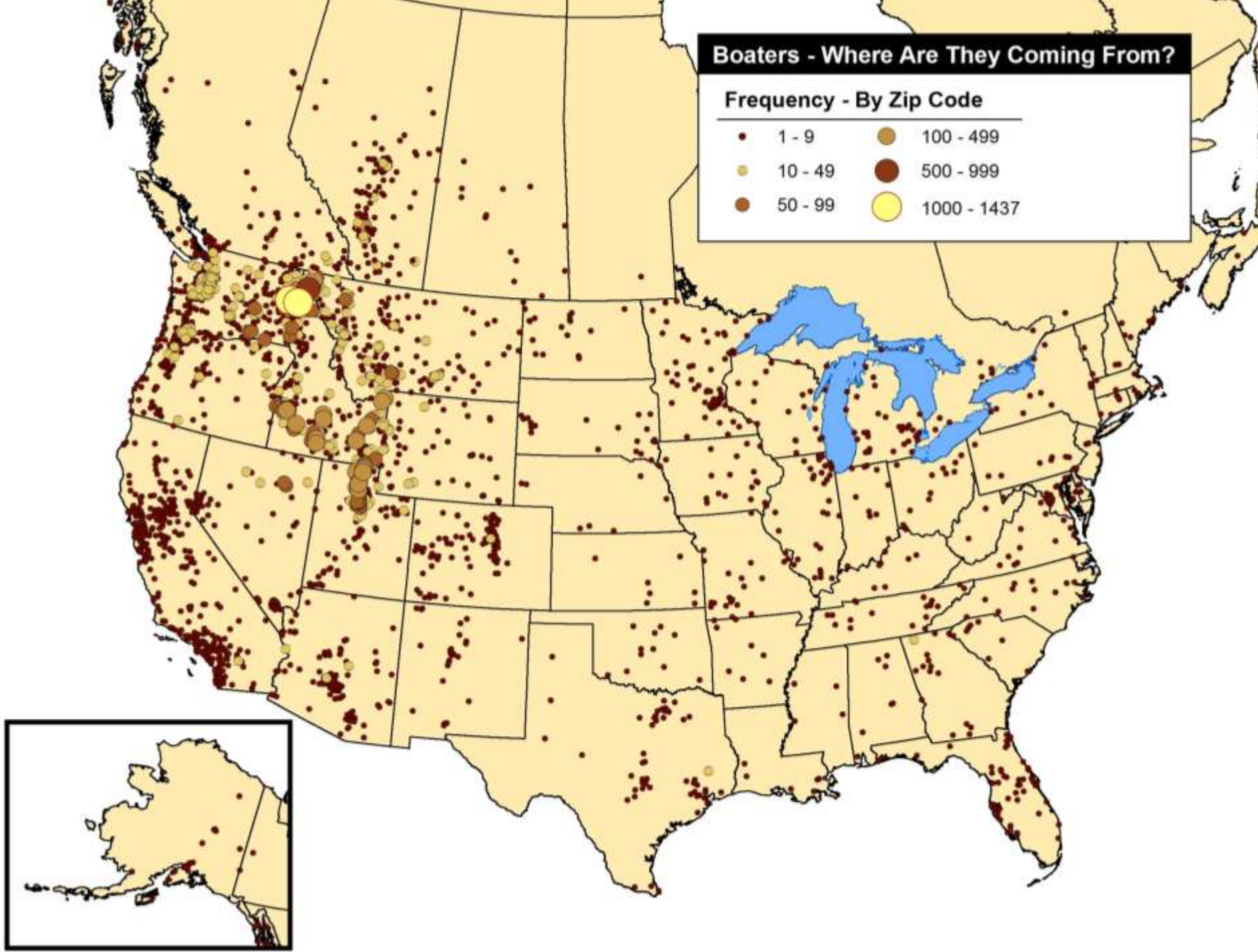


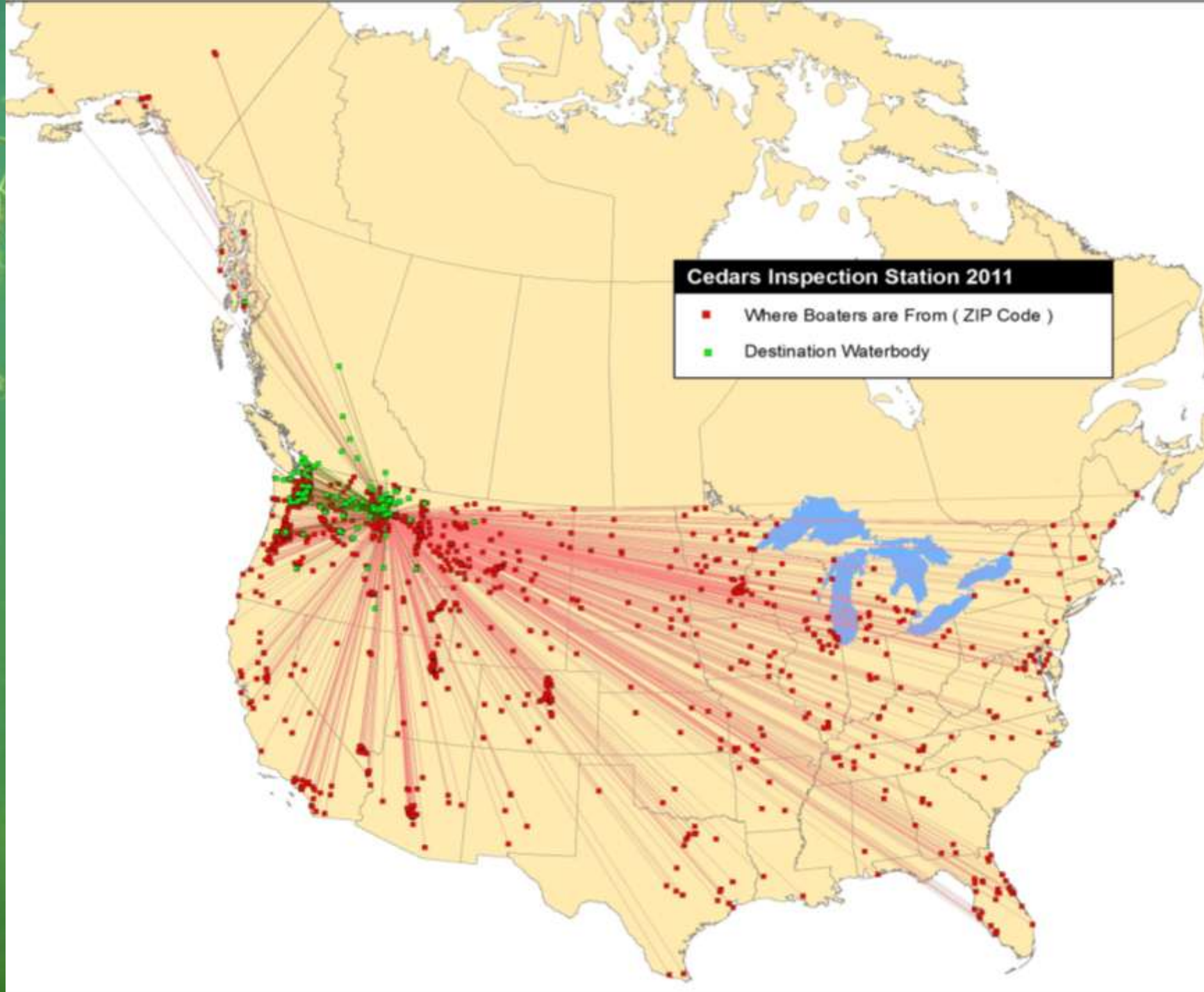
Zebra & Quagga Mussels Prevention



Boaters - Where Are They Coming From?

Frequency - By Zip Code





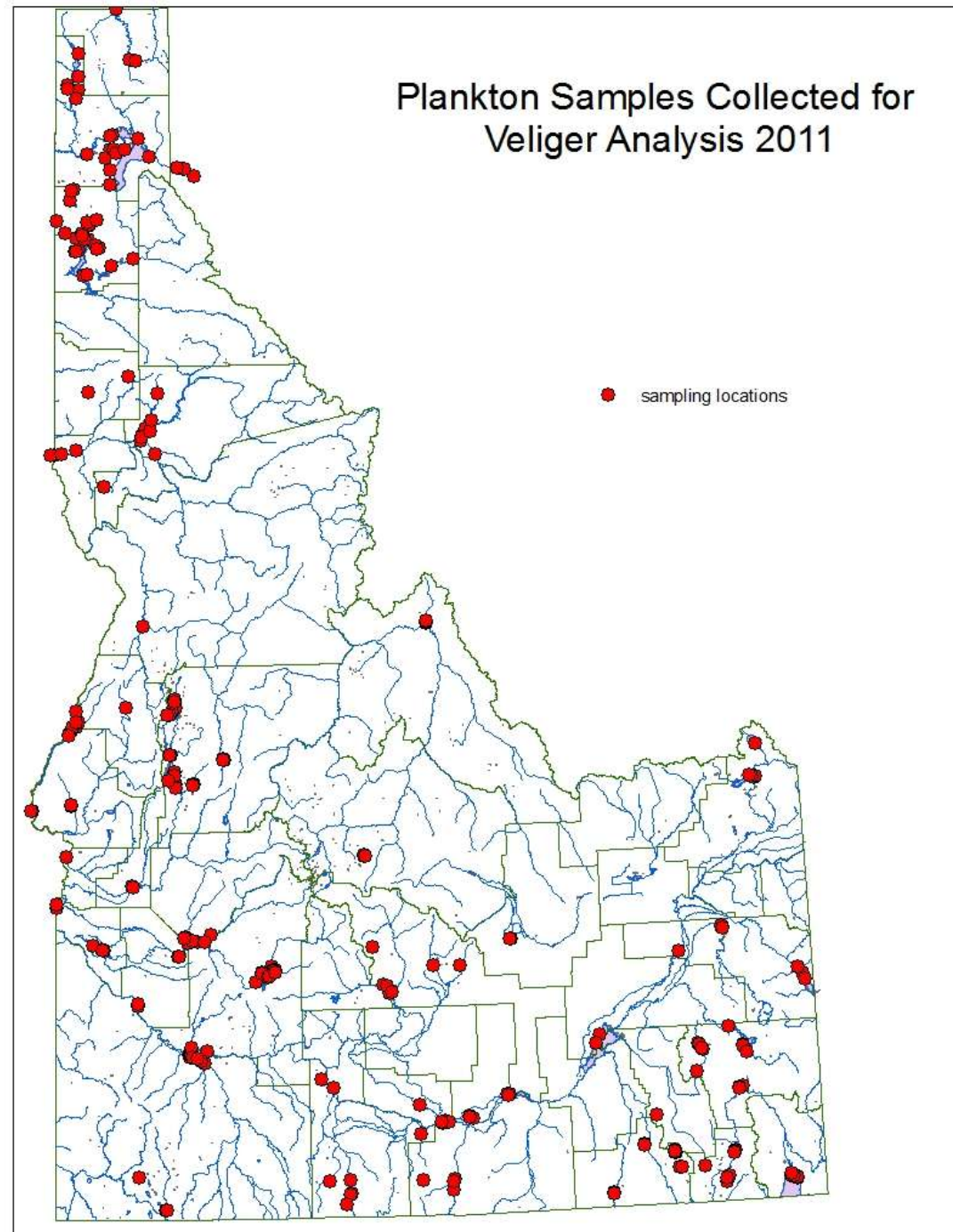
Intercepted Vessels with Mussels

- **2011: 25 boats intercepted**
 - Lake Mead / Havasu
 - Great Lakes
- **2012: 55 Vessels** intercepted since February 3, 2012.
 - Over 50 with milfoil



Survey

- **Over 70 waterbodies surveyed 2011**
 - Zebra / Quagga plankton tows / substrates
 - Invasive plants
 - Other Invasive invertebrates.
- **20 samples from Hayden**



Next Year?

- Appears that some funding will be available to continue treatment.
- Survey this fall to find milfoil.
- Coordinate and plan for treatment during the winter.



More Information



Thomas.woolf@agri.idaho.gov (208)608-3404

www.agri.idaho.gov